



Lotus Domino®  
Application



**GeoCom®**  
**Library**

Version 5.5 Build 421 - 15 July 2005

**Manual WebOPAC**

## Contents

<b>1</b>	<b>Introduction .....</b>	<b>3</b>
1.1	Technical Requirements .....	3
1.2	Installation of webOPAC Database for Notes Administrators.....	3
1.3	Opening the Database webOPAC .....	3
<b>2</b>	<b>Database Configuration .....</b>	<b>4</b>
2.1	Access Rights .....	4
2.1.1	Access Rights for Administrators.....	4
2.2	Access rights for webOPAC Users .....	4
2.3	Configuration.....	5
2.3.1	Title format.....	6
2.3.2	Copy data.....	6
2.3.3	Multiple database OPAC .....	7
2.3.4	Printer .....	9
2.3.5	Customer specific german/english prompts .....	10
2.3.6	License.....	10
<b>3</b>	<b>OPAC Search via Web Browser.....</b>	<b>11</b>
3.1	Switching the Dialogue Language .....	11
3.2	Online Help .....	11
3.3	Display of Search Results.....	12
3.3.1	Brief Information .....	12
3.3.2	Detailed info .....	14
3.3.3	Detailed info including copy data .....	14
3.3.4	Comments.....	15
3.4	Selecting Entries .....	15
3.5	Creating a Booklist.....	16
<b>4</b>	<b>Integrating the Search Form into an Existing Homepage.....</b>	<b>17</b>

## 1 Introduction

The webOPAC database is an extension to the application "GeoCom Library" and provides an interface for library access via web browsers (e.g. Microsoft Internet Explorer, Netscape Navigator).

The database itself contains no searchable data, but is used only for configuration and as user interface.

Configuration of search options can be done for administrators using a Notes client. Invoking the search form and starting search tasks could be done via browser interface.

The search form can be used to select a data source (one or more databases) and to type in search queries. Search queries are processed on the server and results are sent back to the browser as dynamic html pages.

### 1.1 Technical Requirements

The webOPAC database requires a Domino 5 Server. Additionally, the HTTP task has to be started to enable for automatic conversion of Notes documents into HTML pages. Notes 4 databases of type ODS 20 or Notes 5 databases of type ODS 41 can be used as data sources to search in. Full text indexed of all related databases has to be switched on.

### 1.2 Installation of webOPAC Database for Notes Administrators

To install the database on your Lotus Notes workspace just follow these steps:

First select:

**File – database – open.**

Select the server on which the database resides and select it (webOPAC). Now click on the button **add symbol**. The new symbol will be added to your Notes workspace .

### 1.3 Opening the Database webOPAC

To open the database double-click your mouse on the symbol on your Notes-workspace.

☛ **INFO:** To leave the database and return to your Lotus Notes desktop press "**Esc**".

## 2 Database Configuration

Access rights for administrators and users have to be set prior to the first use of the webOPAC database. Furthermore the source databases have to be defined in which the library data resides. Selection options that will be provided to the users and the overall appearance of the search form can be defined, too.

### 2.1 Access Rights

Access rights have to be set for administrators to enable database configuration and for users to enable database research.

#### 2.1.1 Access Rights for Administrators

To enable a database configuration the role [Admin] has to be switched on for administrators. Also, administrating personnel needs at least "Editor" access to the database.

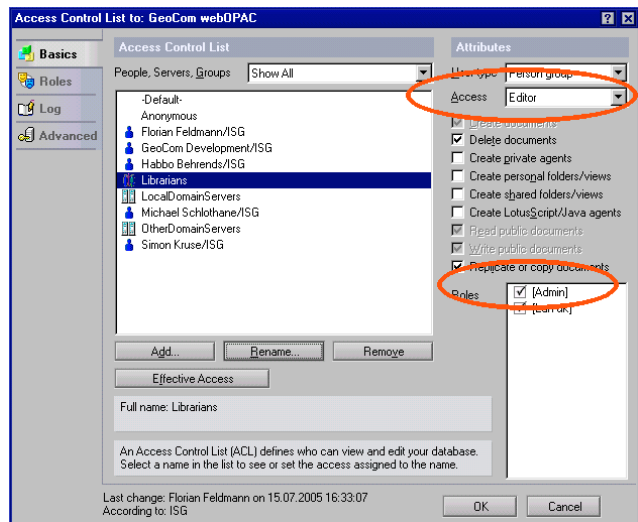


Illustration: Access rights for administrators

### 2.2 Access rights for webOPAC Users

Users of webOPAC can be defined as anonymous or with identification. The search itself – that means access to the library data – is in both cases processed with the rights of the user that saved (and thereby signed) the agent (wOPACWebQueryOpen).

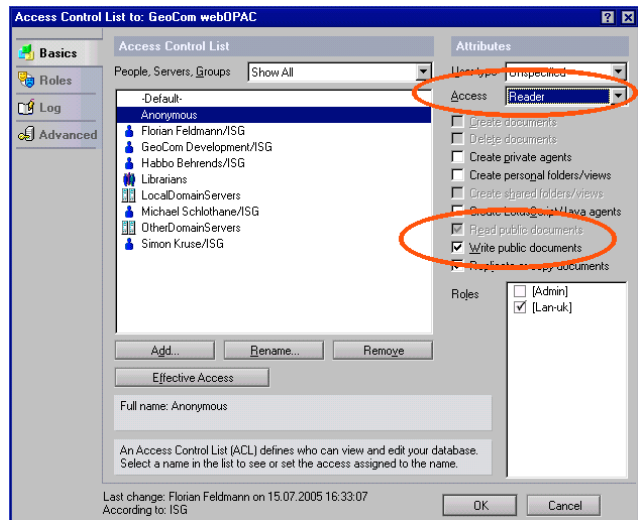


Illustration: Access rights for anonymous webOPAC users

To enable anonymous user access an entry "Anonymous" has to be provided that has rights to read and write public documents.

Using this access type the HTML-result pages shouldn't contain links to the title documents itself in the external databases.

For more information see configuration entry "wOP\_USEDACLINKS".

If the "Anonymous" entry is not provided, the first invocation of the search form is followed by a query for username and password. The input is checked against the public names & addresses database. Username and password are used for the complete session.

## 2.3 Configuration

### Configuration

If the database is opened in a notes client, users that have the role [Admin] can open an input form by clicking the "Configuration" button. Here you can define the following topics

- Title format
- Copy data
- Multiple database OPAC
- Printer
- Customer specific german prompts
- Customer specific english prompts
- License

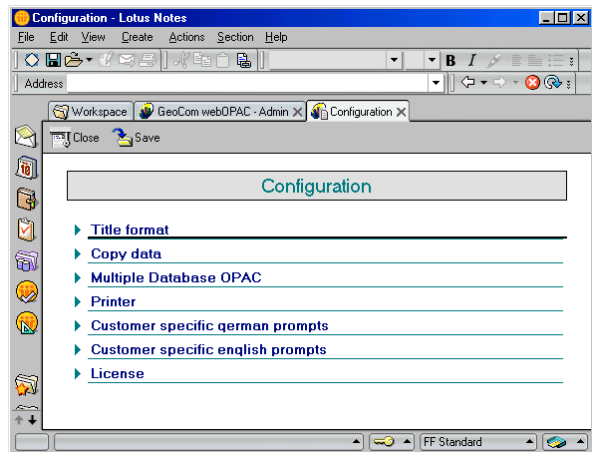


Illustration: Input form "Configuration"

### 2.3.1 Title format

In this section you can define the formats with which titles are to be displayed. For further information on configuring title formats, please refer to the configuration documentation of GeoCom® Library.

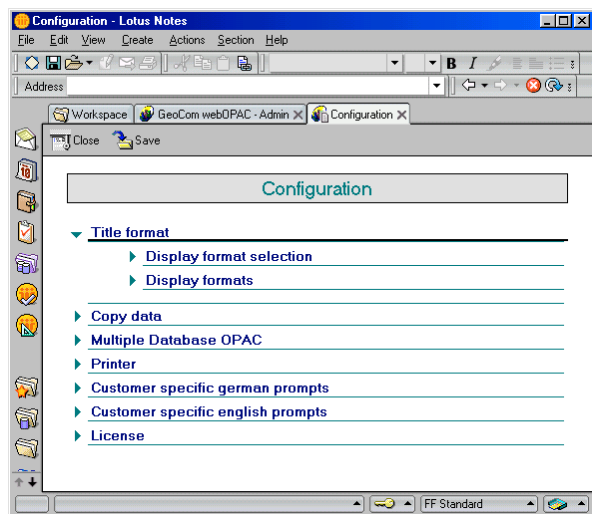


Illustration: Section Title format

### 2.3.2 Copy data

In this section you can define the formats with which copies are to be displayed. For further information on configuring copy data formats, please refer to the configuration documentation of GeoCom® Library.

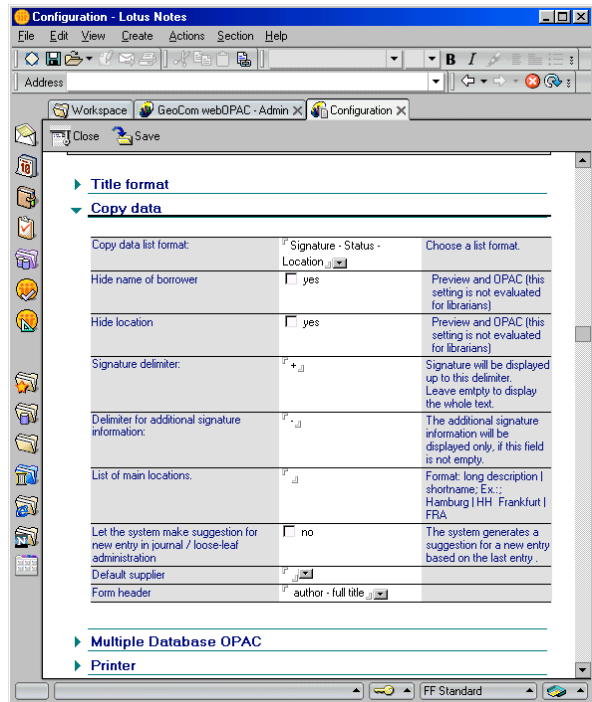


Illustration: Section Copy data

### 2.3.3 Multiple database OPAC

In this section parameters for function and appearance of the OPAC are defined.

#### Type of search form

Via this parameter you can specify which form typ is to be used for OPAC searches.

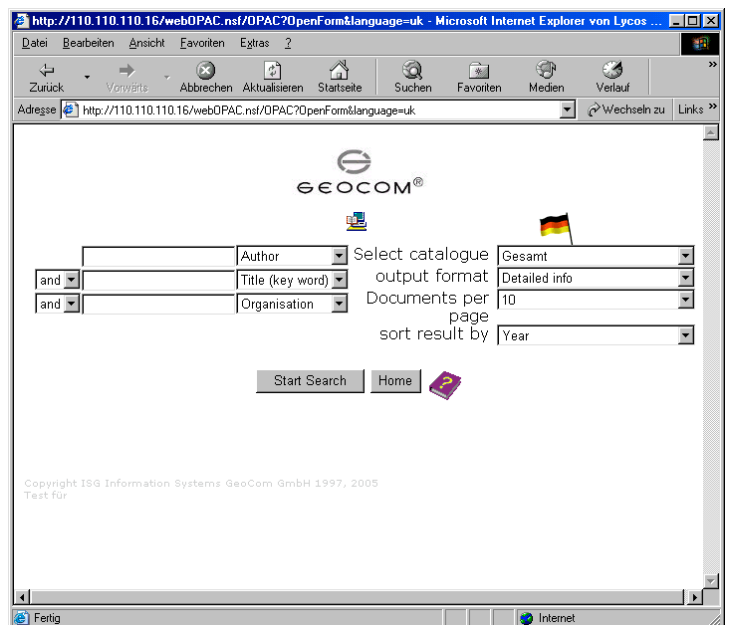


Illustration: Form type 1

Illustration: Form type 2

### Indexed database list

The field "Indexed database list" contains all library databases that are accessible by OPAC. The name of the database and the name of the server (optional) are separated by a vertical line. Specify each new definition on a new line.

*Info:* All library databases have to be full text indexed.

### Index search site database

Within this field you can specify the index of the entry used for searching within the full stock.

### Show database location, info link and login link

By these checkboxes you can determine, whether or not the corresponding information should be shown in webOPAC.

### Short names of databases to display in search result

The field "Short names of databases for display in search results" contains short forms for database descriptions. These short forms are used for display of search results.

### Location name used for database selection

The field "Location name used for database selection" contains the database descriptions, that are displayed in the selection box of the OPAC search form. The connection to the list of databases is realised by a database index that is added to the database description (separated by a vertical line).

If you want to integrate multiple databases in one search, the corresponding database indices have to be added to the database description separated by a colon.

This way you can for example search all English or all German data using one selection entry. In case you want to use language depending expressions in this field you have to replace this expression by a variable that is put into square brackets (e.g.: "[LOCATION1]"). After

that you can define language dependent texts for this variable in the section “Customer specific ” (see chapter 2.3.5).

(e.g.: “LOCATION 1:Wien“ in section „Customer specific texts German“ and “ LOCATION 1:Vienna“ in section “ Customer specific texts English“).

### Query auto extension

Here you can enter a value that will automatically be added to any search query to limit results to a certain extent.

### Presorting via ISBN is default

This checkbox decides whether results should be presorted by ISBN.

### Pre-Sort by the following fields

Here you can specify which fields should be used for pre-sorting.

### Help german und Help english

Into these fields you can enter the language dependent help texts.

### max hits

Specify the maximum number of results to be displayed.

### Support mail address

Enter the address which should be used as support mail address.

## 2.3.4 Printer

In this section you can define printing parameters (for further information please see the configuration documentation).

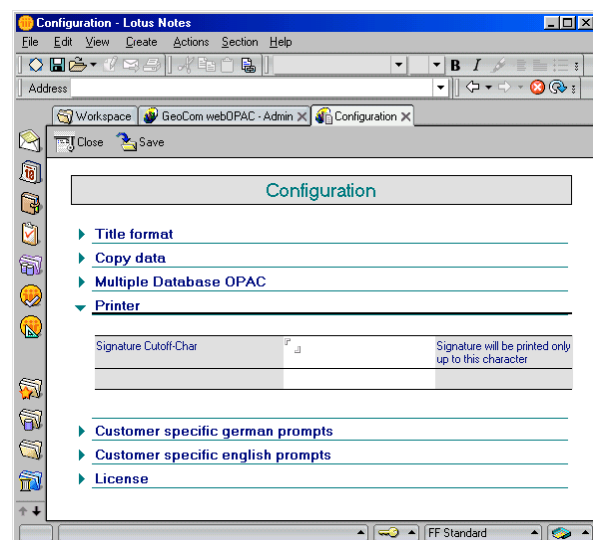


Illustration: Section “Print”

### 2.3.5 Customer specific german/english prompts

In this section you can make modifications that concern text output and OPAC search form display.

You can use the following system variables:

<u>Variable name</u>	<u>Default</u>
<b>wOP_HIDELANBUTTON</b>	<b>0</b>
0 – Show icon for language switching 1 – Hide language switching	
<b>wOP_TYPESELECTDEFAULT</b>	<b>3</b>
Details of search results 1 – Detailed info incl.copy data 2 – Detailed info 3 – Short info	
<b>wOP_USEDOLINKS</b>	<b>1</b>
Links for search results 0 – hide 1 – show	
<b>wOP_SEARCHTITLE</b>	<b>OPAC</b>
Title of OPAC-Search form	
<b>wOP_BOOKLISTTITLE</b>	<b>Booklist</b>
Header for Booklists	

### 2.3.6 License

In this section you can have a look at the current licence and start updates if necessary.

### 3 OPAC Search via Web Browser

The OPAC search form can be opened using a javascript enabled web browser (e.g. Microsoft Internet Explorer or Netscape Navigator).

#### 3.1 Switching the Dialogue Language

You switch between the English and German language interface by clicking the English or German flag.

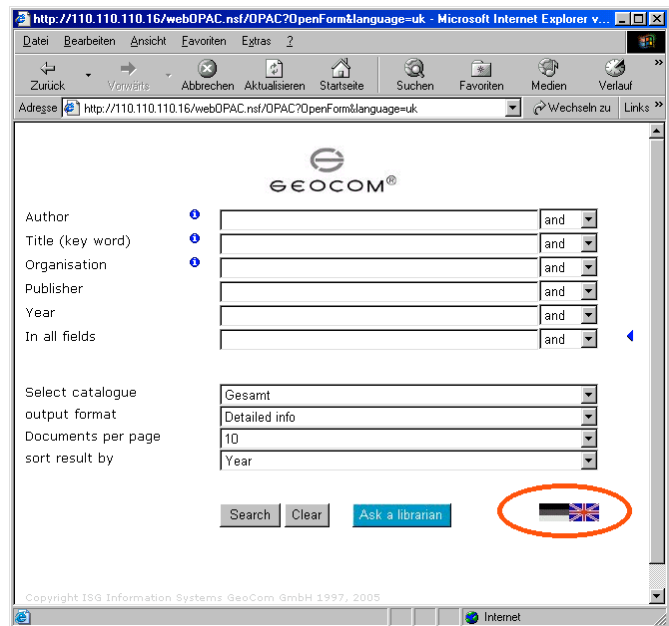


Illustration: Switching the dialogue language

#### 3.2 Online Help

If you click the icon of the book with a question mark a new window opens displaying the help text.

**Remark:** The "Help" button is only available within search form type 1. Users of search form type 2 can use the button "Ask a librarian" to send an e-mail to the e-mail address specified within the configuration document.

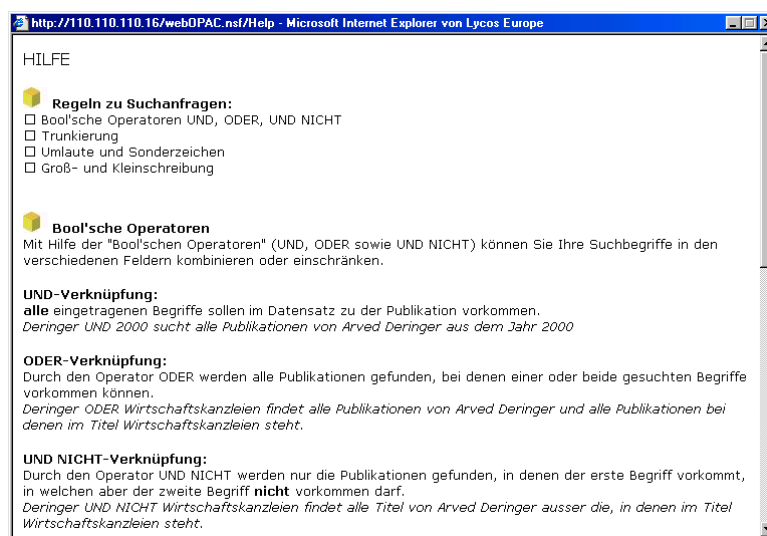


Illustration: "Online Help"

### 3.3 Display of Search Results

Search result can be displayed in three different ways.

#### 3.3.1 Brief Information

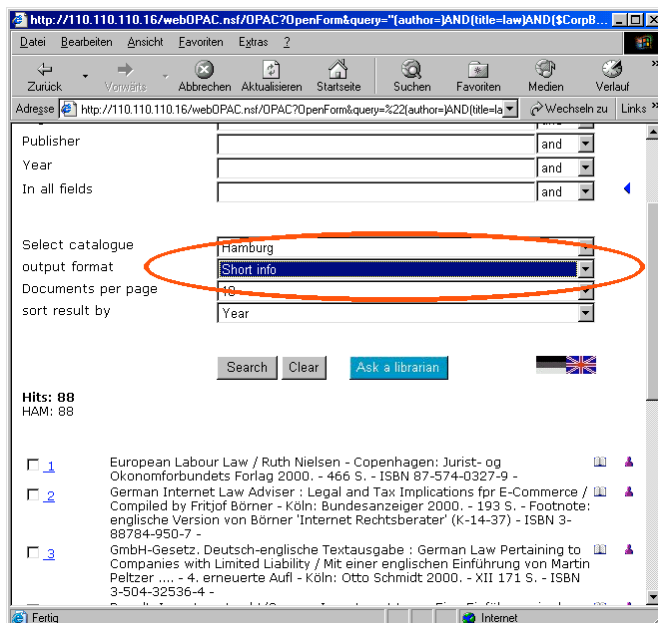


Illustration: Search result "Short info"

When displaying data in "Short info" style the most important information regarding the corresponding publications will be displayed as a single string per hit.

### 3.3.2 Detailed info

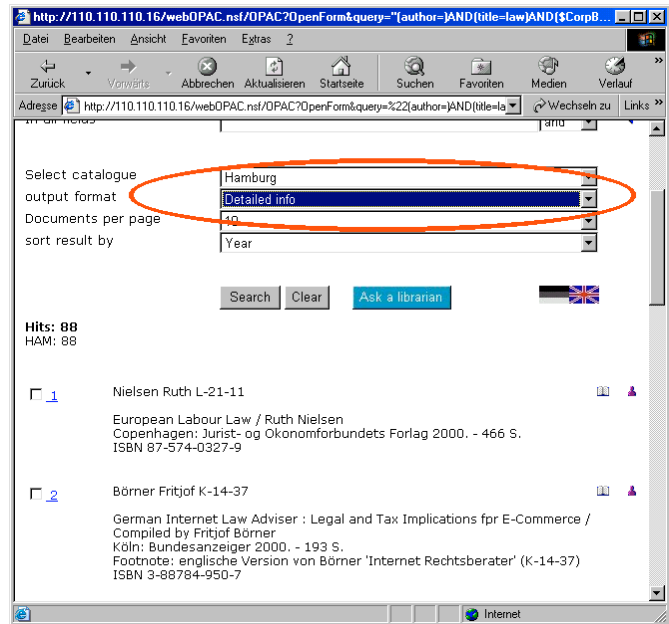


Illustration: Search result "Detailed info"

This option will show all relevant information regarding the corresponding publications. Each info part will consist of a single line.

### 3.3.3 Detailed info including copy data

This type of display corresponds to the type of display that appear to users accessing a library database via notes client. All title information, with all copy data including lending status is displayed.

However, some special information like scanned content indices and file attachments will not be shown here. If these information should be presented to the user, too, a direct link to the document in the library database can be used. In this case you have to provide appropriate access rights for the user.

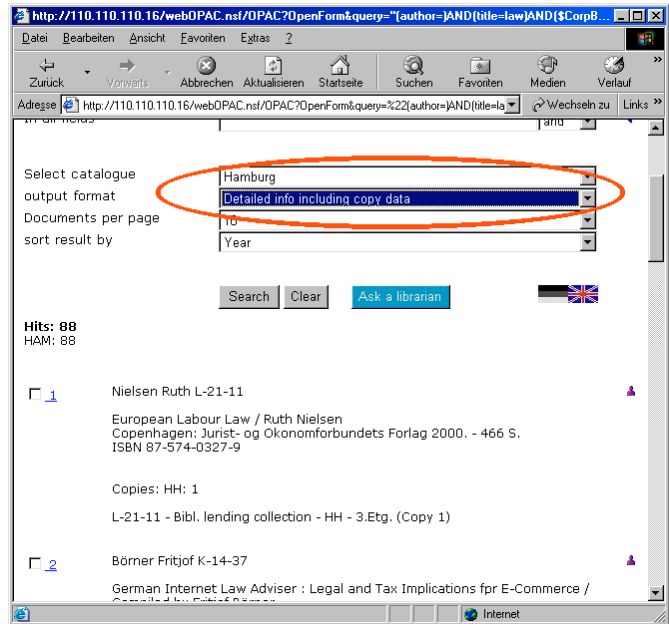


Illustration: Search result "Detailed info including copy data"

### 3.3.4 Comments

User comments will be displayed as symbols within the result list.

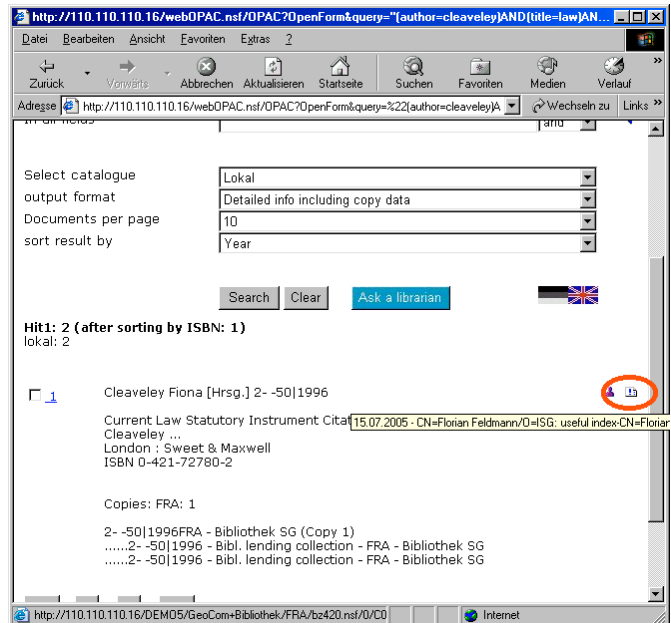


Illustration: Result list with comments

### 3.4 Selecting Entries

You can select entries of the result list within the browser to print a book list. The selection remains even if you browse between different pages of one search result. Every new search resets this selection.

### 3.5 Creating a Booklist

Selected result entries can be printed into a book list.

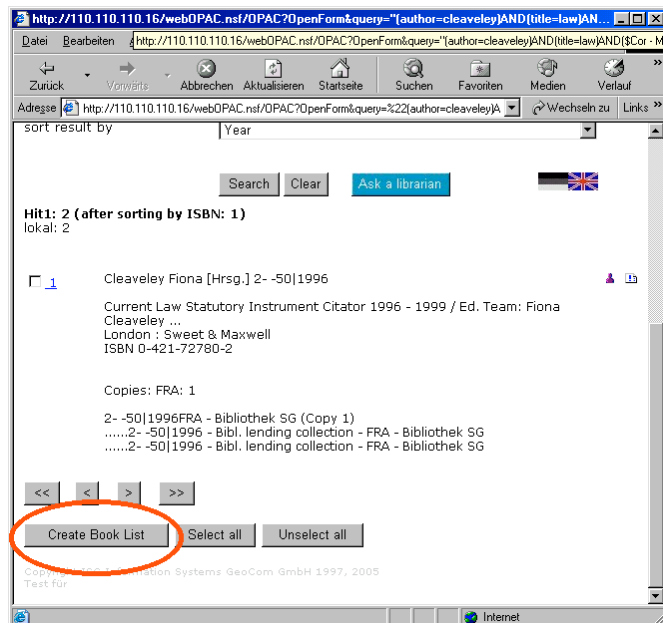


Illustration: Button "Create Book List"

For creating a book list click the button "Create Book List".

Illustration: Book list

#### 4 Integrating the Search Form into an Existing Homepage

You can integrate the application by including a URL into an existing HTML page.

By default the database opens with the following start page (if it's opened by "http://...../webOPAC.nsf").

Administrators can modify this starting page as suitable. The user can reach the search form by clicking the text "Start search...".

Of course the search form can be addressed directly, too ("http://...../webOPAC.nsf/OPAC?OpenForm").