



Lotus Domino® Application



## GeoCom® Library

Version 7 – September 2008

Update 7.3 Build 703b

Copyright ISG Information Systems GeoCom® GmbH 2001-2008

# Contents

<b>1 INTRODUCTION</b> .....	<b>3</b>
<b>2 REVISED WEBOPAC</b> .....	<b>3</b>
<b>2.1 Configuration of HTML code</b> .....	<b>3</b>
2.1.1 Search / result page: HTML base .....	3
2.1.2 Search / result page: HTML for search fields.....	4
2.1.3 Search / result page: HTML for parameters.....	5
2.1.4 Search / result page: HTML for actions .....	5
<b>2.2 Login and Logout for browser interface</b> .....	<b>5</b>
<b>2.3 Configuration simple / extended search</b> .....	<b>5</b>
2.3.1 Field list .....	6
2.3.2 Parameters.....	7
2.3.3 Actions .....	7
<b>3 ACTION "ACCESSIONS LIST"</b> .....	<b>7</b>
<b>4 BUGFIXES</b> .....	<b>8</b>
4.1 Saving articles without reference document .....	8
4.2 Call keyword agent from article form.....	8

## 1 Introduction

This documentation describes changes and enhancements to GeoCom® Library version 7.3 Build 703b compared to the previous version 7.3 Build 703.

## 2 Revised webOPAC

Several additional configuration options have been added to the webOPAC to facilitate adoption to customer specific needs.

### 2.1 Configuration of HTML code

The search and result page of the webOPAC browser interface can be adjusted to customer specific needs. For this purpose, the fields "base", "search fields", "parameters" and "actions" are available.

Further the field for CSS definitions, valid for all HTML definitions, is still available here.

Default

A button named "Default" is available for CSS definitions as well as each HTML definition field. Clicking this button will reset the corresponding field's content to a system internal default value.

#### 2.1.1 Search / result page: HTML base

With this subsection you can specify HTML code for the base format of the search and result page. You can use any standard HTML tags. You can also use the following placeholders which will be replaced with the corresponding form parts at runtime:

##### **\$\$HEADERIMAGE**

Shows the image resource defined as header image.

##### **\$\$SEARCHTEXTFIELDS**

Shows the section "search fields" (the actual format of this section will be defined within subsection "Search / result page: HTML for search fields").

##### **\$\$USERPARAMETER**

Shows the section "parameters" (the actual format of this section will be defined within subsection "Search / result page: HTML for parameters").

##### **\$\$SEARCHBUTON\_USERACTIONS**

Shows the section "actions" (the actual format of this section will be defined within subsection "Search / result page: HTML for actions").

##### **\$\$SEARCHRESULTINFO**

Shows the line "search result info". After a search has been performed, this line will provide information on the number of entries found.

#### **\$\$SEARCHRESULT**

Shows the search results. All entries found within a query will be shown at this page location. The actual format of result display can be defined within section "Title format".

#### **\$\$HELPPAGE**

Shows the section "search hint". This field can be defined in field "Search hint" and can provide additional information (e.g. if a search did not yield any result or an error has occurred).

#### **\$\$BOOKLISTBUTTON**

Shows the button "Create selection list". After a search has been performed, this button can be used to create a list of all selected result entries.

#### **\$\$SELECTALLBUTTON, \$\$CLEARALLBUTTON**

Show the button "Select all" resp. "Clear all", which can be used for fast selection and deselection of multiple results.

#### **\$\$SCROLLFIRSTBUTTON, \$\$SCROLLPREVIOUSBUTTON, \$\$SCROLLNEXTBUTTON, \$\$SCROLLLASTBUTTON**

These placeholders can be used to display the navigation buttons for the result list.

#### **\$\$USERINFO**

This placeholder will be replaced at runtime with the Notes username of the currently logged-in user.

#### **\$\$LICENSE**

This placeholder will be replaced at runtime with the current license information specified within the global configuration document of the corresponding library database.

### **2.1.2 Search / result page: HTML for search fields**

Within this subsection the layout of search fields can be defined. To specify the layout of all search fields, standard HTML and the following placeholders can be used.

**\$0** – Denotation of the search field, e.g. "Author"

**\$1** – Selection field for boolean operators (AND, OR, NOT)

**\$2** – Input field for the search query

### 2.1.3 Search / result page: HTML for parameters

Within this subsection the layout of the parameters section can be defined. Standard HTML and the following placeholders can be used.

**\$0** – Denotation of the parameter field, e.g. "Documents per page"

**\$1** – Selection field for parameter value

### 2.1.4 Search / result page: HTML for actions

Within this subsection the layout of the actions section can be defined. Standard HTML and the following placeholders can be used.

**\$0** – "Search" button

**\$1** – Textual links to the corresponding actions

## 2.2 Login and Logout for browser interface

In case users should not be able to operate webOPAC anonymously, the actions "Login" and "Logout" can be displayed within the actions section of the search and result page (see also 2.3.3, Actions).

When clicking the link "Login" the user will be prompted for his Notes username and password. All consecutive actions will then be performed with the access rights of the logged in user.

When clicking the link "Logout" the user will be logged out of the application and redirected to a corresponding page.

This (optional) redirect can be defined within section "Main parameter" using the field "Logout parameter". Here you can enter the command "&RedirectTo=" (without quotation marks) followed by the web address that should be redirected to.

## 2.3 Configuration simple / extended search

Configuration of the simple and extended search forms can no longer be performed from within section "Main parameters". Instead, corresponding selection options are available from within section "Multiple database OPAC".

First you can use parameter "Search type default" to select whether to show the simple or extended search form upon opening the webOPAC.

For simple and extended search form each, you can define the available search fields, parameters and actions.

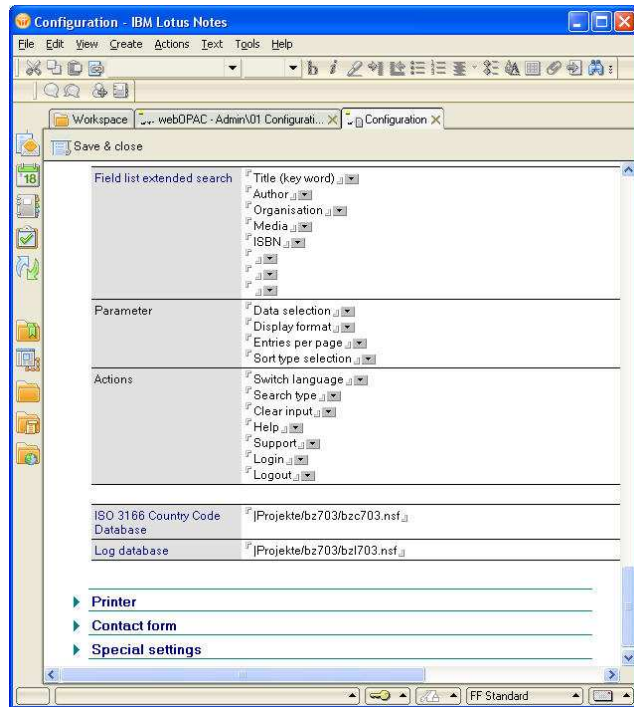


Illustration: Configuration of the extended search form

### 2.3.1 Field list

For the simple and extended search forms each, up to eight search fields can be specified. For each of the eight fields, click the selection button and select the field you want to display from the dialog list.

If you do not want to show a field, just leave the selection field blank. The corresponding search field will not be displayed within the browser interface.

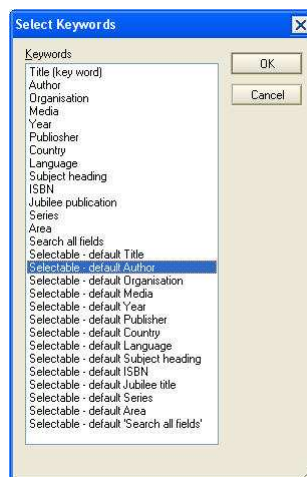


Illustration: Dialog search field selection

### 2.3.2 Parameters

For both types of search forms independently you can specify which search parameters should be visible to the user. You can display the parameters "Data selection", "Display format", "Entries per page" and/or "Sort type selection".

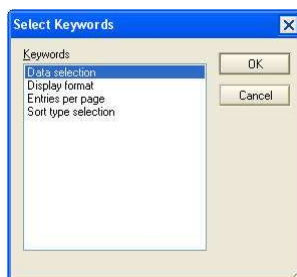


Illustration: Dialog Parameters

### 2.3.3 Actions

Finally you can also specify which actions should be available in simple or extended search form.

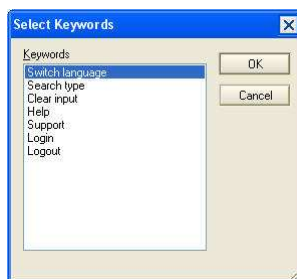


Illustration: Dialog Actions

## 3 Action "Accessions list"

The action "Accessions list..." from view "Administration – 01 Acquisitions – a. orders" has been extended.

Up to now an accessions list could only be created using the full library stock. To enable accessions list restricted to sub-stocks, a new selection field has been added to the dialog "Accessions list".

Using this field you can specify whether the full stock of the application should be searched for accessions ("Scan entire database", current behaviour), or the search should be limited to a sub-stock ("Scan selected entries only").

The latter case will limit the search for accessions to those catalogue entries that have been selected (i.e. ticked) in a corresponding view.

This preselection can be performed manually, by full text search or by opening a specific view containing e.g. only certain categories of titles.



Illustration: Dialog Accessions list

☛ **NOTE:** Corresponding access rights assumed (the current user must dispose of the role [Librarian]) this action can also be called from any "Catalogue" view, using "Copy data – Accessions list...".

## 4 Bugfixes

### 4.1 Saving articles without reference document

Due to missing publisher's info, articles without reference to a main title document could not be saved.

This error has been fixed. Publisher's info will no longer be regarded mandatory, so articles without reference document can properly be saved to the database.

### 4.2 Call keyword agent from article form

Due to an error within the function call, the agent for keyword selection (field "Subject heading") could not be called from within an opened article document.

The function call has been fixed. Keywords for articles can now be selected via the corresponding agent.