

Lotus Domino[®] Application



GeoCom[®] Library

Version 5.5 Build 421 – 10 June 2005

Update documentation

Copyright ISG Information Systems GeoCom GmbH, 1997 - 2005

Contents

<u>1</u>	<u>INTRODUCTION</u>	3
1.1	<u>General information</u>	3
1.2	<u>Access rights</u>	3
<u>2</u>	<u>APPLICATION UPDATES</u>	4
2.1	<u>Layout / Navigator</u>	4
2.2	<u>Inventory</u>	4
2.2.1	<u>Stock taking definition</u>	4
2.2.2	<u>Stock taking</u>	5
2.2.3	<u>Reports</u>	5
2.3	<u>OPAC Index lists</u>	6
2.4	<u>VLB Import</u>	6
2.5	<u>Simple order form</u>	6
2.6	<u>Creating duplicates of multi-volume sets</u>	7
2.7	<u>Journal and loose-leaf administration</u>	7
2.8	<u>Replication conflicts</u>	8
<u>3</u>	<u>CONFIGURATION</u>	9
3.1	<u>Formatting tags <NAMEX> and <AUTHORVX></u>	9
3.2	<u>Synchronization of fields to copy documents</u>	9
3.3	<u>Configuration backups</u>	9
<u>4</u>	<u>BUG FIXES</u>	10

1 Introduction

This documentation describes changes to the application GeoCom® Library in version 5.5. build 421.

1.1 General information

Notes Client: The update GeoCom® Library 5.5 build 421 requires usage of a Notes client version 5.09, 6.03 or 6.5.

New license key: With the update you have received a new license key which has to be added to the global configuration document.

Action Upgrade to 5.5. Build 421: After you have updated the application with the new template, you must run the action "Admin – Upgrade to 5.5 Build 421" from within the global configuration document.

Action Update View Titles: Before using the updated database you have to update the documents to the new layout. Use the action "Admin – Database: Update View Titles" for this purpose.

1.2 Access rights

The access rights management has been updated for GeoCom® Library 5.5 build 421. The following roles will not be used by the application anymore:

[Librarian-uk], [Librarian-de], [ViewMV-uk], [ViewMV-de], [ViewJuris-uk], [ViewJuris-de], [AdminLL-uk], [AdminLL-de]

The roles **[Lan-uk]** resp. **[Lan-de]** are only used for first time access to the database and serve to determine the default language (afterwards, the language can be selected within the personal configuration document).

2 Application updates

2.1 Layout / Navigator

The layout of the navigator has been updated and re-organized completely. All views are now separated into three groups, according to their functionality: "Catalogue", "Administration" and "Maintenance".

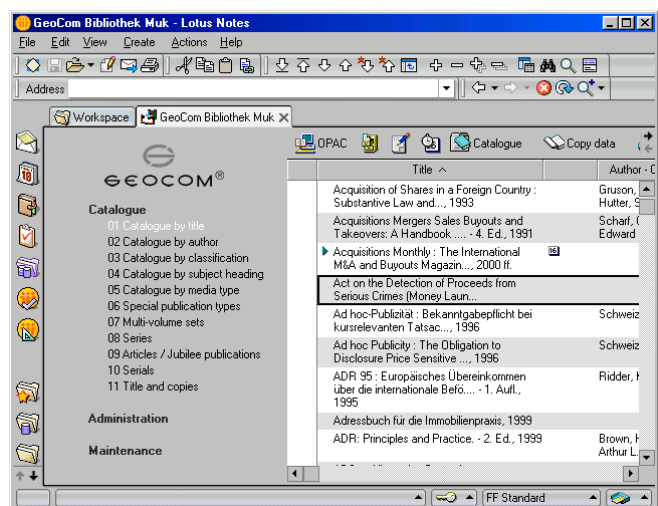


Illustration: Navigator

2.2 Inventory

GeoCom® Library 5.5 build 421 offers functions for performing inventorization of the complete stock.

2.2.1 Stock taking definition

Each inventory needs an inventory definition document specifying the frame parameters for this import. Parameters are:

- Description
- Comments
- Start and end dates
- Way of identification (via barcode, access number and/or full text search)
- Responsible employees

The action "Admin – Create stock taking definition" can be used to create an inventory definition document.

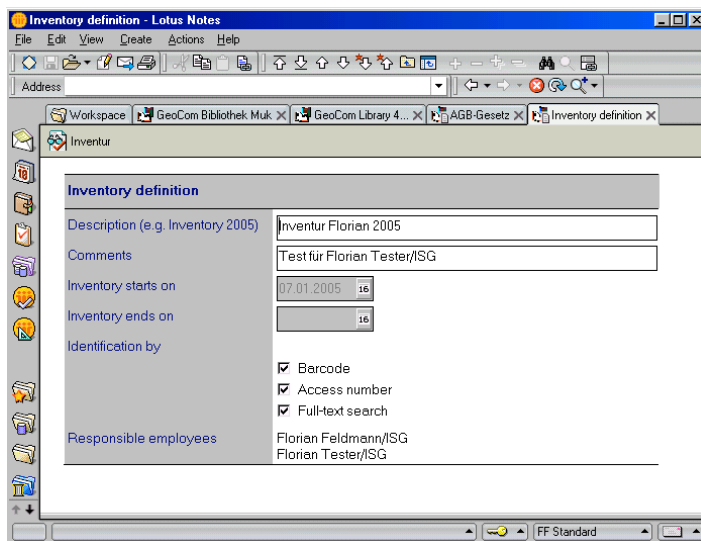


Illustration: Inventory definition

2.2.2 Stock taking



Via the button "Inventory – Take to stock" responsible employees can start an inventory session. The following dialog is used to identify and inventurize the copies within the application.

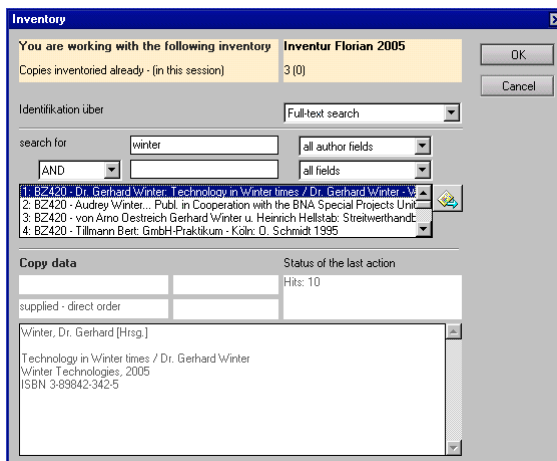


Illustration: Dialog Inventory

Depending on the settings within the inventory definition document, copies can be identified by barcode, access number and / or full text search. Each identified copy can be inventurized.

Inventory sessions can not only be performed by librarians but also by authorized support personell.

2.2.3 Reports



At any time, inventory reports can be created using the button "Inventory – Report". Within a dialog you can select parameters about which copies should be included into the report.

2.3 OPAC Index lists

Several search fields within the OPAC search form have been provided with key word selection lists, which let you select certain keywords from corresponding lists. These selection lists include "Author(s)", "Copy status" and "Corporate body".

2.4 VLB Import

You can now import title data from a VLB CD-ROM. In order to perform imports follow these steps:

1. Copy the file *vlbapi.dll* from VLB CD-ROM into your Windows system directory
2. Specify the path to the VLB data source within your personal configuration document (setting "Path of VLB CDROM").

After this you can select the action "Import data from VLB..." from within an open title document to adopt data from the CD-ROM.

2.5 Simple order form

GeoCom® Library 5.5 build 421 now disposes of a simplified order form, allowing you to order copies of existing titles as well as new titles including corresponding copies.

The button "Copy data – Prepare acquisition" opens the simple order form. Depending on the document type you had previously selected, this will order a copy to an existing title or create a new title including a copy order.



1. If you had selected an existing title, the button will order one or more copies of this certain title. Only the corresponding copy data can be edited, the title data is not editable.
2. If you had not selected a title document (e.g. select a main document or a comment) this action will create a new title as well as order corresponding copies. All relevant title data can be entered this way.

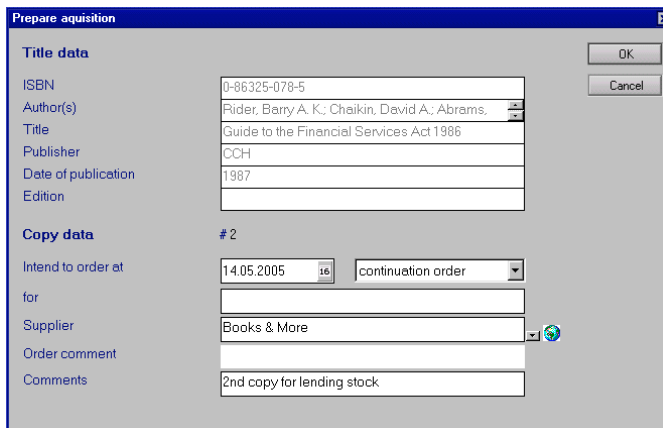
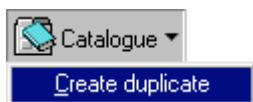


Illustration: Dialog "Prepare acquisition" – order a copy to an existing title

2.6 Creating duplicates of multi-volume sets



You can use the button "Catalogue – Create duplicate" to create a copy of the selected title. However, upon using this action with multi-volume sets, the behaviour is as follows:

Creating a copy of the main title of the set will create another standalone entry of the multi-volume set.

Creating a duplicate of linked volume will create a new duplicate of this volume that will still be linked to the selected main title document!

In order to assign these duplicates to the newly created main title, you can use the action "Admin – Selected documents: Assign to a multi-volume set..." from view "Catalogue – 07 Multi-volume sets".

2.7 Journal and loose-leaf administration

The delivery notes for issues of journals and loose-leaf collections will now be stored as single documents. Thus, the upper limit of entries has been raised from 200 to 5000 per journal / loose-leaf collection.

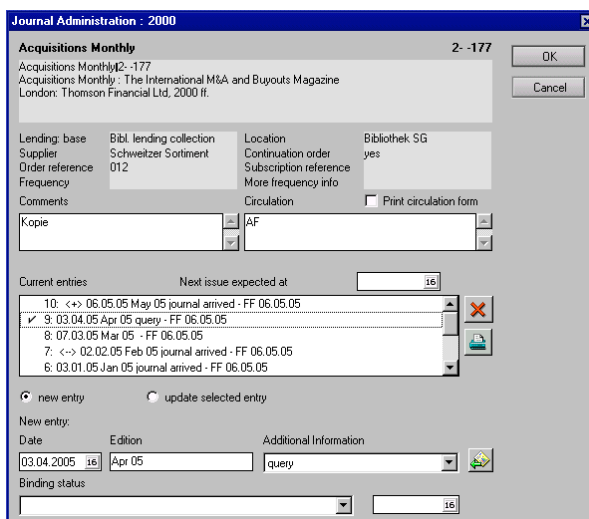


Illustration: Dialog Journal Administration

2.8 Replication conflicts

GeoCom® Library 5.5. build 421 disposes of a new folder holding replication conflicts (i.e. documents which occur, when two users open the same document at a time, but save different changes).

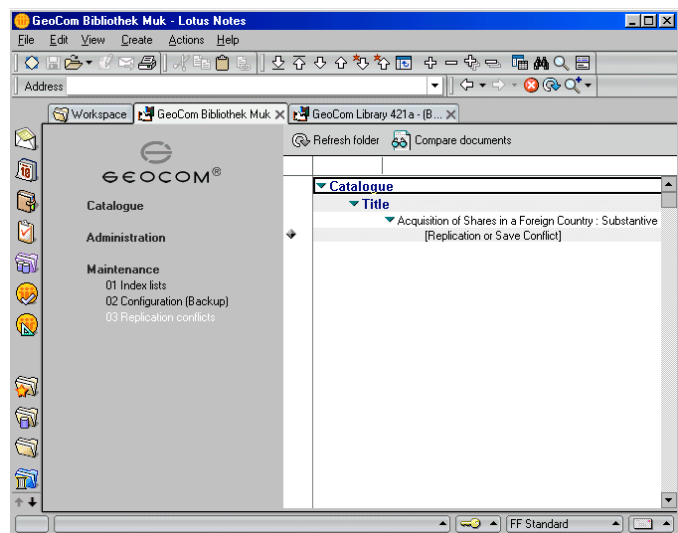
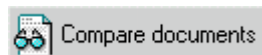


Illustration: View "Maintenance – 03 Replication conflicts"



The button "Refresh folder" can be used to update this folder.

Be aware that this action may be time consuming, as all documents within the database have to be checked for conflicts!



If a conflict is found, you can use the button "Compare documents" to compare the original document and the conflict document on field level. Thus you can decide which values are correct and have to be accepted. The main document can then be adjusted properly, while the conflict document can be deleted.

3 Configuration

The following changes apply to the global configuration document.

3.1 Formatting tags <NAMEX> and <AUTHORVX>

These placeholders can be used within the configuration document.

<NAMEX> uses the first name from all author lists (i.e. "Author(s)", "Author (original form)", "Coporate body", "Corporate body (original form)"), <AUTHORVX> only uses the original forms of the previous lists.

3.2 Synchronization of fields to copy documents

Within the section "Special configuration" the setting

TITLEFIELDSYNCTOCOPY_SPECIAL=Field1<>Field2<>...

can be used to synchronize fields from the title document to the corresponding copy documents.

3.3 Configuration backups

Upon each saving action of the global configuration document, a copy is stored to the folder "Maintenance – 02 Configuration (Backup)".

By a corresponding action, a backup copy can be restored to the global configuration, which overwrites the current configuration settings.

4 Bug fixes

This section lists all bug fixes done to GeoCom® Library in version 5.5 build 421.

- **OPAC book lists with copies:**
Book lists now show all copies, if selected.
- **Sending e-mails with links from within catalogue views:**
Links within messages from librarians to normal users now perform correctly.
- **Internal usage of field URL:**
Field has been renamed to URL2 to avoid problems with internal Notes routines.
- **Deadline monitoring:**
Copies with status "ordered – trial subscriptions" are now correctly included into the deadline monitoring.
- **Acquisition lists:**
All copies instead of only the first one are now shown within acquisition lists.
- **Non-standalone titles:**
The signature for copies of this type is now correctly shown within preview.
- **Delivery notes for journals / loose-leaf collections:**
New issues of journals or loose-leaf collections will now always be saved.