

GeoCom[®] Library

The management system for distributed bookstocks



With GeoCom[®] Library registration and management of your bookstocks and periodicals collection is just a few mouse clicks away. It is best suited for multiple location offices operating nation wide!

Advantages

- platform independent management system
- management of single-volume and multi-volume works, series, articles/contributions to jubilee publications, periodicals and loose-leaf binders
- union catalogue and inventory
- OPAC search function
- research via browser
- acquisition, administration, lending
- printing of signature labels and book cards
- order templates and MS-Word integration
- management of correspondence
- statistical information on lending
- data import from existing stocks corresponding to the formats RAK, MAB, and VLB
- database handling is easily learned
- extensive security functions through allocation of access rights
- fully integrable into existing systems

What is GeoCom[®] Library?

GeoCom[®] Library is a library management system designed to support enterprises, authorities and associations in their management of bookstocks and periodicals collections. Platform independence and the replication feature of Lotus Domino[®] make this database especially suitable for companies operating at multiple locations.

Secure Data Management

GeoCom[®] Library maintains a union catalogue and copy data. The union catalogue contains monographic publications, multi-volume works, and periodicals and serves as a knowledge base for information on existing (but yet to be acquired) publications, on availability, location and other information such as lending status.

The catalogue provides different criteria to display the titles: Single-volume and multi-volume works, series, articles / contributions to jubilee publications, periodicals, and loose-leaf binders. New titles are recorded manually or imported from other data pools.

OPAC-Search Function

GeoCom[®] Library provides comprehensive OPAC-search functions: The OPAC function lets you search for all documents listed in your stock in various ways (e.g. using full text search or boolean operators). It supports search within distributed stocks as well as data import from remote locations. Research can be done via Notes Client or Internet Browser.

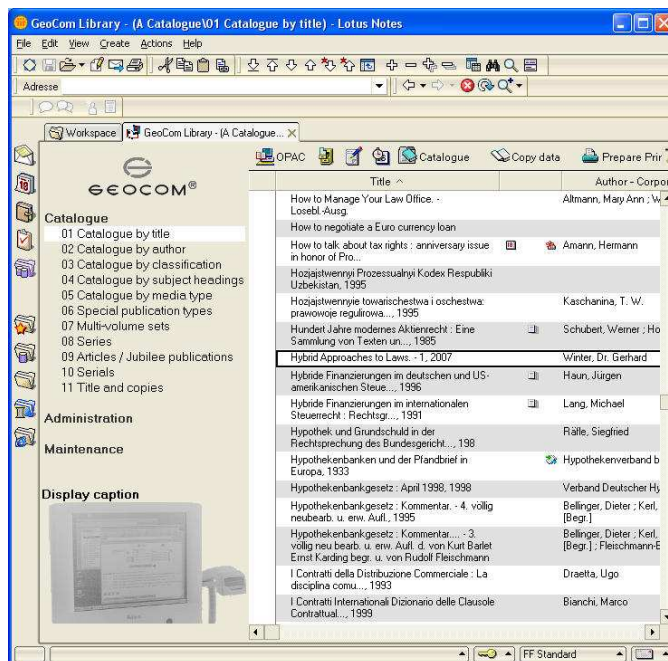
Location specific Classification and Distribution of Signatures

Decide, if you want to draw up systematic information enterprise wide or only specific

for your location. Suggestions for signature labels will be proposed automatically on basis of the systematical classification.

Support for Librarians

To make daily work for librarians easier, GeoCom[®] Library provides different features: integrated modules for acquisition, cataloguing process with checking for duplicates, administration of articles, jubilee publications and multi-volume works or series, as well as barcode identification for the lending process.



Extensions regarding customer specific needs

Trial version of GeoCom[®] Library, data import from existing electronic catalogues and purchase of the source code is offered by **ISG Information Systems GeoCom GmbH**.

Information

For additional information please visit www.geocom.de or give us a call at +49 (0) 234-941750